



**Cable ID: V17**

**Test Summary: FAIL**

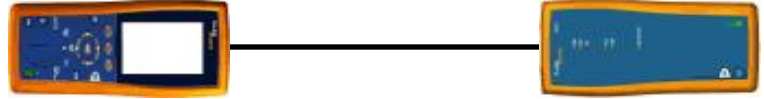
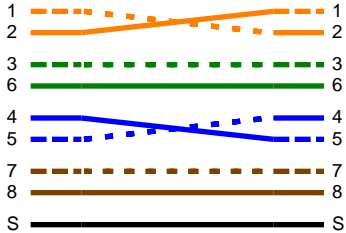
Date / Time: 08/06/2007 06:15:00am  
 Headroom: 2.4 dB (NEXT 12-36)  
 Test Limit: TIA Cat 6 Perm. Link  
 Cable Type: Cat 6 FTP

Operator: NICOLAS HEINEN  
 Software Version: 1.4100  
 Limits Version: 1.0400  
 NVP: 70.0%

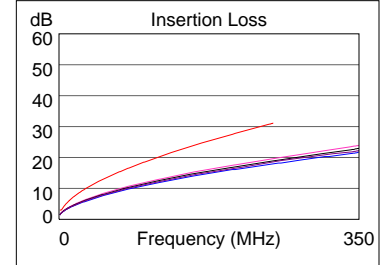
Model: DTX-1800  
 Main S/N: 9414041  
 Remote S/N: 9414042  
 Main Adapter: DTX-PLA002  
 Remote Adapter: DTX-PLA002

Wire Map (T568B)

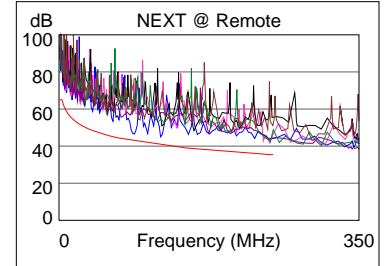
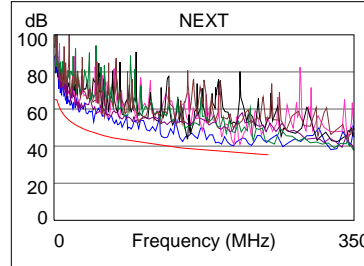
**FAIL**



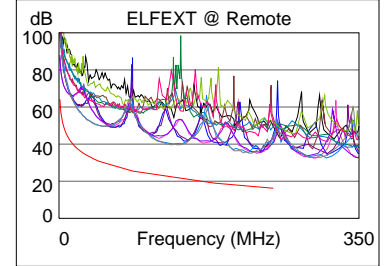
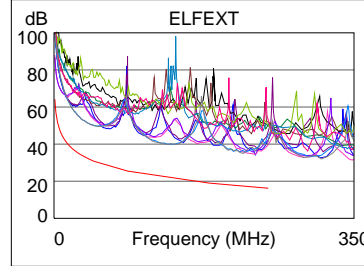
Length (m), Limit 90.0	[Pair 12]	63.0
Prop. Delay (ns), Limit 498	[Pair 36]	323
Delay Skew (ns), Limit 44	[Pair 36]	23
Resistance (ohms)	[Pair 36]	10.2
Insertion Loss Margin (dB)	[Pair 36]	11.5
Frequency (MHz)	[Pair 36]	250.0
Limit (dB)	[Pair 36]	31.1



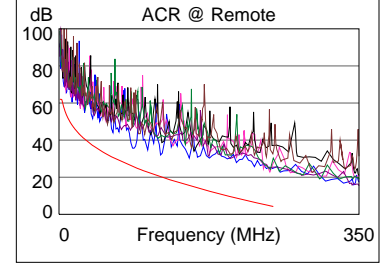
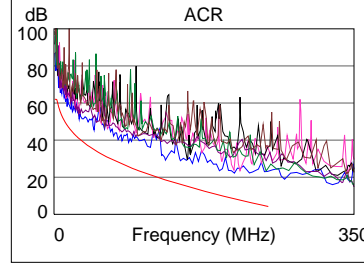
	Worst Case Margin		Worst Case Value	
	MAIN	SR	MAIN	SR
<b>PASS</b>				
Worst Pair	12-36	12-36	12-36	12-45
<b>NEXT (dB)</b>	2.4	3.7	3.4	6.1
Freq. (MHz)	149.0	87.8	210.5	246.0
Limit (dB)	39.0	42.8	36.6	35.5
Worst Pair	12	36	12	36
<b>PSNEXT (dB)</b>	3.3	5.9	3.3	6.3
Freq. (MHz)	209.5	85.8	209.5	246.0
Limit (dB)	34.0	40.4	34.0	32.8



	Worst Case Margin		Worst Case Value	
	MAIN	SR	MAIN	SR
<b>PASS</b>				
Worst Pair	12-36	78-45	12-36	12-45
<b>ELFEXT (dB)</b>	17.4	17.7	17.4	18.0
Freq. (MHz)	234.5	130.5	234.5	231.5
Limit (dB)	16.8	21.9	16.8	16.9
Worst Pair	45	12	45	12
<b>PSELFEXT (dB)</b>	18.0	17.5	18.0	17.5
Freq. (MHz)	219.5	235.0	220.5	235.0
Limit (dB)	14.4	13.8	14.3	13.8



	Worst Case Margin		Worst Case Value	
	MAIN	SR	MAIN	SR
<b>N/A</b>				
Worst Pair	12-36	12-36	12-36	12-45
<b>ACR (dB)</b>	10.0	9.8	15.3	18.2
Freq. (MHz)	15.3	5.4	230.0	246.0
Limit (dB)	48.1	58.0	6.3	4.6
Worst Pair	36	36	36	36
<b>PSACR (dB)</b>	10.4	10.4	17.0	17.7
Freq. (MHz)	7.0	6.9	247.5	246.0
Limit (dB)	53.3	53.5	1.9	2.0



	Worst Case Margin		Worst Case Value	
	MAIN	SR	MAIN	SR
<b>PASS</b>				
Worst Pair	12	12	12	12
<b>RL (dB)</b>	3.3	3.4	6.4	6.3
Freq. (MHz)	13.1	24.1	202.5	203.0
Limit (dB)	20.4	19.1	10.9	10.9

