



Cable ID: V20

Test Summary: FAIL

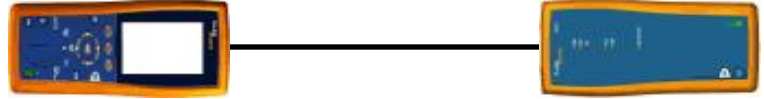
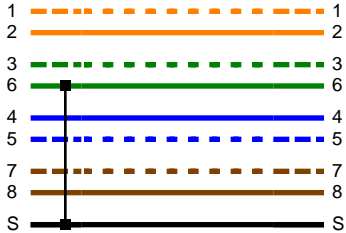
Date / Time: 08/06/2007 06:18:50am
 Headroom: -12.2 dB (NEXT 12-36)
 Test Limit: TIA Cat 6 Perm. Link
 Cable Type: Cat 6 FTP

Operator: NICOLAS HEINEN
 Software Version: 1.4100
 Limits Version: 1.0400
 NVP: 70.0%

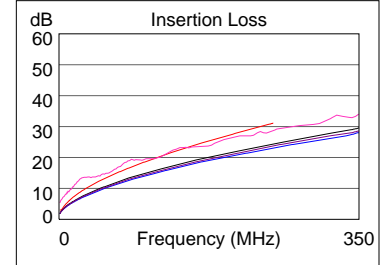
Model: DTX-1800
 Main S/N: 9414041
 Remote S/N: 9414042
 Main Adapter: DTX-PLA002
 Remote Adapter: DTX-PLA002

Wire Map (T568B)

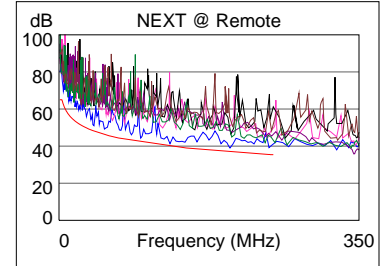
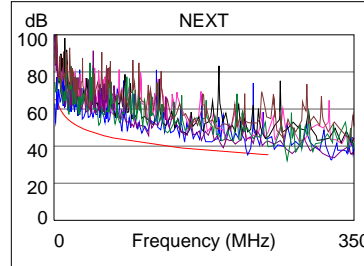
FAIL



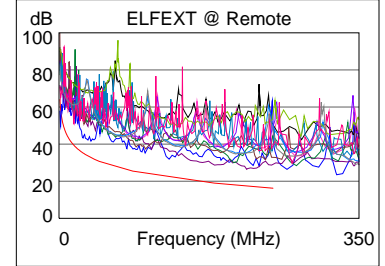
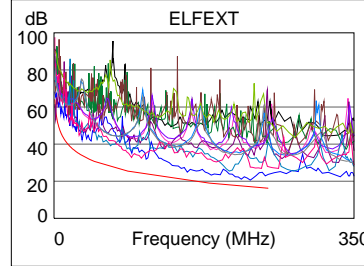
Length (m), Limit 90.0	[Pair 36]	0.0
Prop. Delay (ns), Limit 498	[Pair 45]	408
Delay Skew (ns), Limit 44	[Pair 45]	408 F
Resistance (ohms)	[Pair 36]	13.1
Insertion Loss Margin (dB)	[Pair 36]	-4.3 F
Frequency (MHz)	[Pair 36]	27.6
Limit (dB)	[Pair 36]	9.3



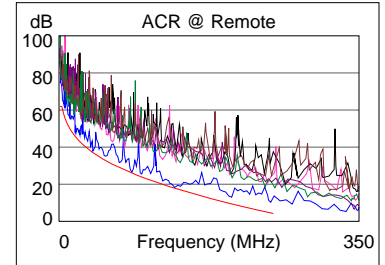
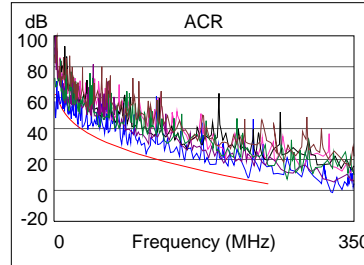
	Worst Case Margin		Worst Case Value	
	MAIN	SR	MAIN	SR
FAIL				
Worst Pair	12-36	12-36	12-36	12-36
NEXT (dB)	-12.2 F	0.9	-0.8	3.2
Freq. (MHz)	1.9	130.0	226.5	246.5
Limit (dB)	65.0	40.0	36.0	35.4
Worst Pair	36	12	12	36
PSNEXT (dB)	-9.3 F	3.2	1.0	4.4
Freq. (MHz)	1.9	120.5	226.5	246.5
Limit (dB)	62.0	38.0	33.4	32.8



	Worst Case Margin		Worst Case Value	
	MAIN	SR	MAIN	SR
FAIL				
Worst Pair	36-12	12-36	12-36	36-12
ELFEXT (dB)	-6.0 F	-9.7 F	3.2	8.9
Freq. (MHz)	1.5	1.6	219.5	219.5
Limit (dB)	60.7	60.0	17.4	17.4
Worst Pair	12	36	36	12
PSELFEXT (dB)	-3.0 F	-3.1 F	5.4	6.5
Freq. (MHz)	1.5	1.5	229.5	229.0
Limit (dB)	57.7	57.7	14.0	14.0



	Worst Case Margin		Worst Case Value	
	MAIN	SR	MAIN	SR
N/A				
Worst Pair	12-36	12-36	12-36	12-36
ACR (dB)	-15.2	0.0	1.4	5.5
Freq. (MHz)	1.9	84.0	226.5	246.5
Limit (dB)	62.0	26.2	6.7	4.6
Worst Pair	36	36	36	36
PSACR (dB)	-12.3	2.3	5.3	6.7
Freq. (MHz)	1.9	84.0	249.0	246.5
Limit (dB)	59.0	23.7	1.7	2.0



	Worst Case Margin		Worst Case Value	
	MAIN	SR	MAIN	SR
FAIL				
Worst Pair	36	36	36	36
RL (dB)	-12.8 F	-7.7 F	-12.8	-7.2
Freq. (MHz)	22.4	1.9	26.3	1.0
Limit (dB)	19.3	20.2	18.9	19.1

